

eCo-FEV

**efficient Cooperative infrastructure
for Fully Electric Vehicles**

(nr. FP7- 314411)

GC-ICT-2011.6.8 - PPP GC: *ICT for fully electric vehicles* - (f) Integration of the FEV in the cooperative transport infrastructure.

Joint EC / European Green Cars Initiative Clustering Event 2012

12-07-2012

HITACHI
Inspire the Next

Massimiliano LENARDI
HITACHI Europe Ltd

Outline

Introduction of the **eCo-FEV** project

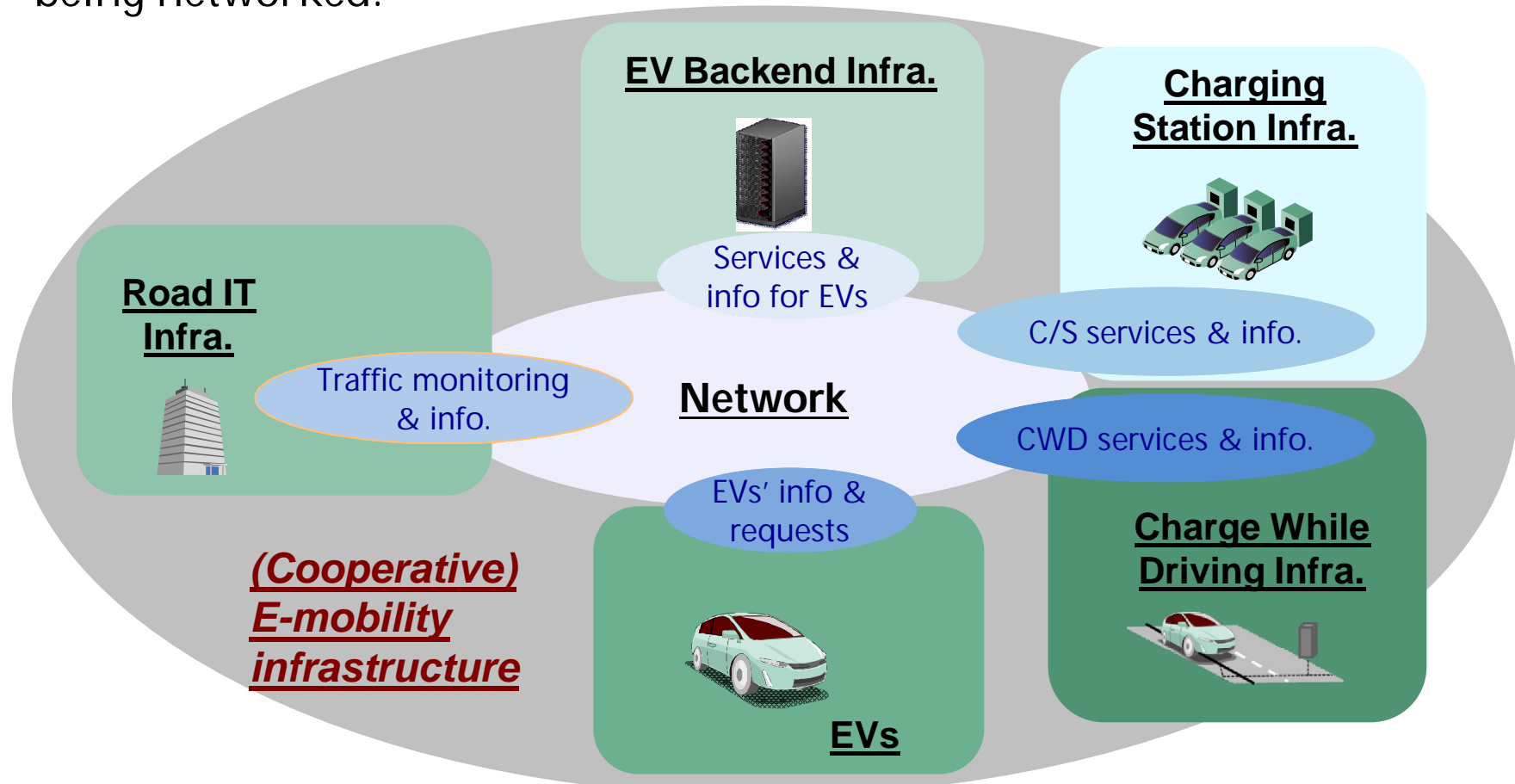
- Main Objectives
- Project Concept
- General Architecture
- Major Milestones
- Partners
- WBS

eCo-FEV – Main Objectives

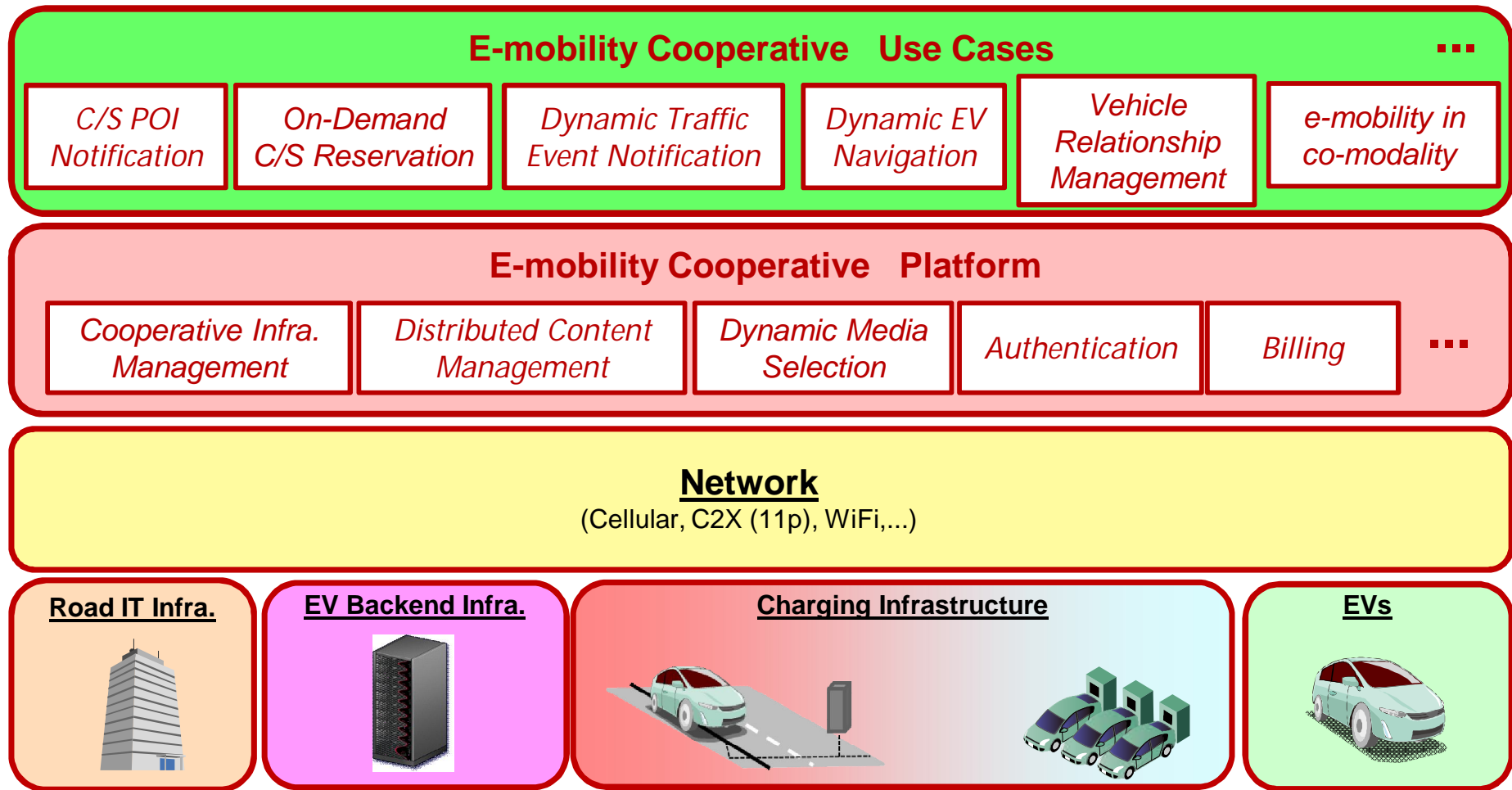
- Definition of a *cooperative electro mobility system architecture* for FEV and users
- Development of *advanced telematics services* for the FEV user in the whole travelling, and of an *energy charging management*.
- Demonstration of standard-compliant smart infrastructure's cooperation and FEV/infrastructures integration, based on reliable communication at urban and highway test sites.
- Development and evaluation of the Well-To-Wheel analysis for different technological solutions (energy efficiency).
- Integration of FEV into overall traffic flow.
- Business impact assessment and user acceptance evaluation.
- Environmental impact analysis.

eCo-FEV – Project Concept

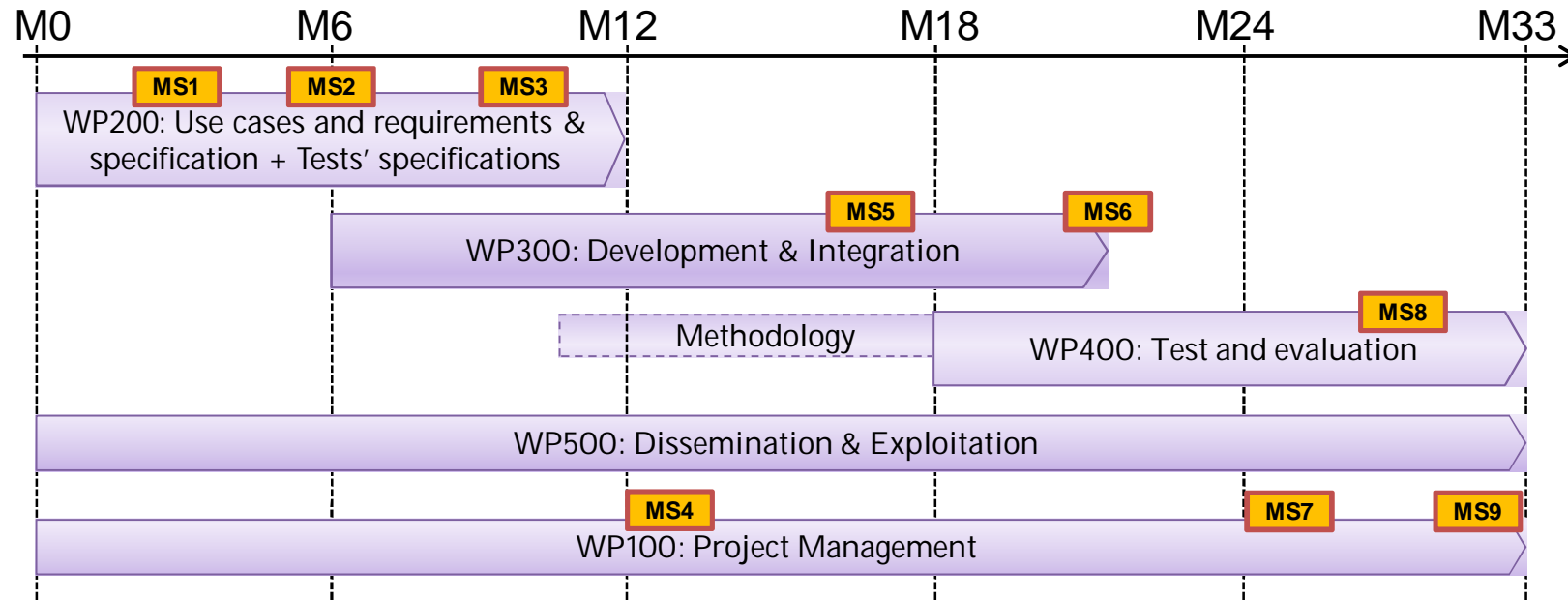
Innovate next generation E-mobility infrastructure by mutual system cooperation among EVs and independent EV-related infrastructures being networked.



eCo-FEV – General Architecture



eCo-FEV – Major Milestones / Time plan



Start: 1st Sept 2012

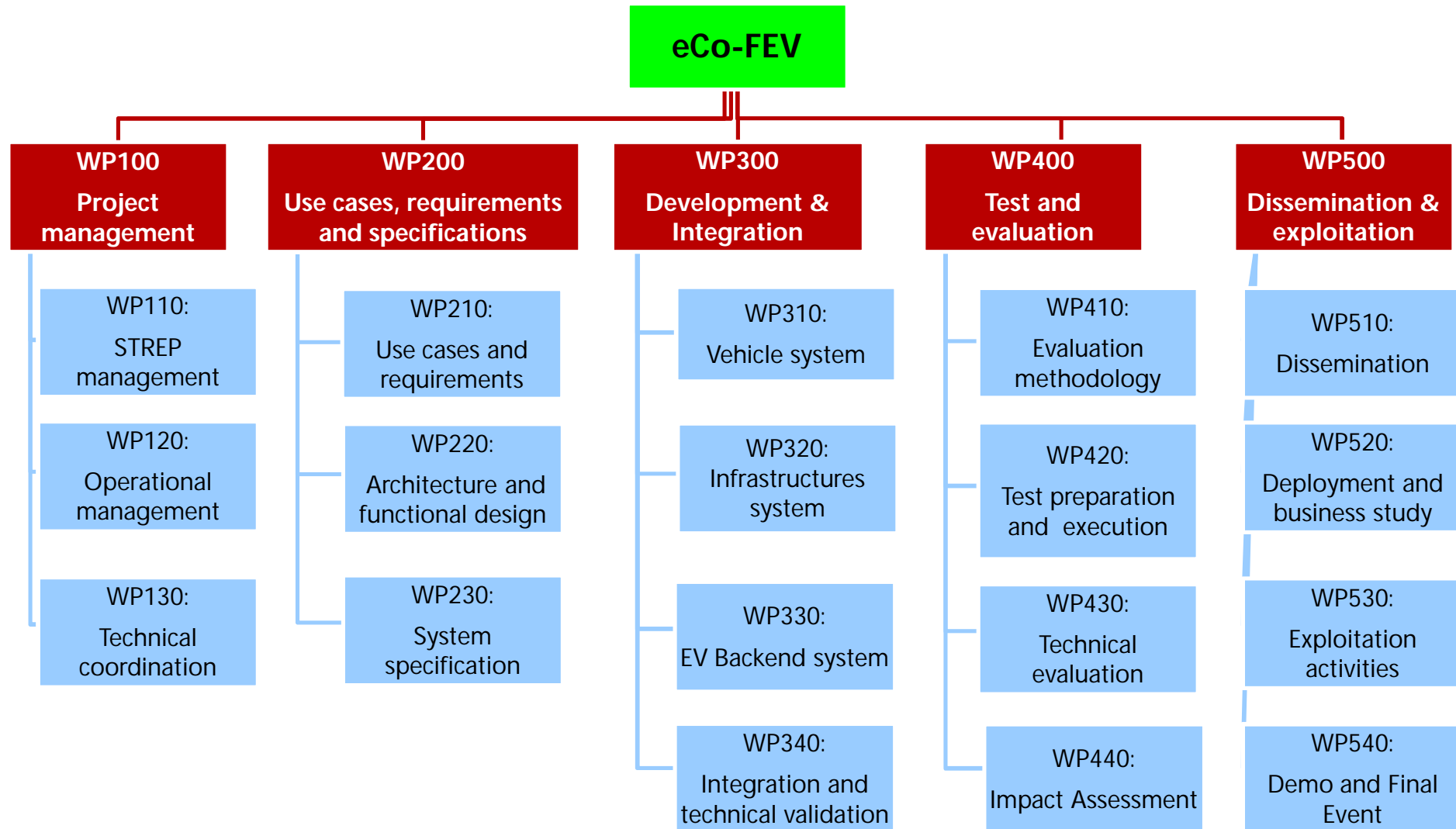
MS1	Use case selection	M3
MS2	Use case requirements, scenarios and test purposes ready	M6
MS3	Architecture functional design ready	M10
MS4	1 st Annual Review, 1 st eCo-FEV workshop	M13
MS5	Sub system prototype ready and validated	M17

MS6	eCo-FEV system integrated and validated	M22
MS7	2 nd annual review. 2 nd eCo-FEV workshop with on-site demonstration	M25
MS8	Test execution	M28
MS9	Final Review. Final workshop and demonstration event	M32

Partners

Participant no.	Participant organization name	Part. short name	Country
1 (Coordinator)	Hitachi Europe Ltd	HIT	UK
2	Commissariat de à l'énergie atomique et aux énergies alternatives	CEA	FR
3	Centro Ricerche Fiat S.C.p.A.	CRF	IT
4	EU Center for Information and Communication Technologies GmbH	EICT	DE
5	Politecnico di Torino	POLITO	IT
6	Renault SAS	REN	FR
7	Technische Universität Berlin	TUB	DE
8	S.I.T.A.F. S.p.A Società Italiana Traforo Autostradale del Frejus	SITAF	IT
9	Bluethink S.p.A	BLU	IT
10	Facit Research GmbH & Co. KG	Facit	DE
11	Conseil général de l'Isère	CG38	FR
12	ENERGRID S.p.A	ENER	IT
13	Institute for Economic Research and Consulting GmbH	IERC	DE

eCo-FEV – Work Breakdown Structure



Thanks !



Dr. Massimiliano LENARDI

Laboratory Manager
Information and Communication Technologies Laboratory (ICTL)
HITACHI Europe – ERD

<http://www.hitachi.eu/erd/>

<http://www.hitachi.eu/about/hitachi/activity/automotive/>

Massimiliano.Lenardi@hitachi-eu.com